

Co-operative Education

**Greening Health Care
Workshop #4
Nov 29, 2017**

Co-op: a Definition

A program which alternates periods of academic study with periods of work experience in appropriate fields of business, industry, government, social services and the professions.

Job Eligibility Criteria:

- Job/work term is approved by the University
- Student is engaged in productive work
- Student is paid for their work
- Student performance is supervised and evaluated by the employer
- Student is required to submit a work term/reflective report
- Work term/job is full time (35 hrs/week) and are normally 16 weeks duration

Role of the Co-op Office

- Find and build relationships with potential employers
- Prepare students for their co-op job search (resumes, cover letters, interviews, job search techniques etc.)
- Manage the employment process to help as many students find work as possible
- Visit and monitor co-op students and employers during work terms
- Assist Ryerson schools and departments in the development of co-op programs

Co-op Programs

Faculty of Community Services

Occupational Health and Safety
Public Health and Safety

Faculty of Engineering and Architectural Science

Architectural Science
Chemical Engineering

Faculty of Science

Biology
Biomedical Sciences
Chemistry
Computer Science
Financial Mathematics
Mathematics and Its Applications
Medical Physics

Co-op Programs

Ted Rogers School of Management

Accounting and Finance

Business Technology Management

Economics and Management Science

Entrepreneurship

Global Management Studies

Hospitality and Tourism Management

Human Resources Management & Organizational Behavior

Law and Business

Marketing Management

Real Estate Management

Retail Management

For more visit: <http://www.ryerson.ca/trsm-co-op>

Sample Work Term Sequences

| Year 1 | | | Year 2 | | | Year 3 | | | Year 4 | | | Year 5 | | |
|--------|--------|--------|--------|--------|----------------|----------------|--------|----------------|--------|----------------|----------------|--------|--------|------------|
| Fall | Winter | Spring | Fall | Winter | Spring | Fall | Winter | Spring | Fall | Winter | Spring | Fall | Winter | Spring |
| Study | Study | Free | Study | Study | WKT 110 | WKT 210 | Study | WKT 310 | Study | WKT 410 | WKT 510 | Study | Study | Graduation |

| Year 1 | | | Year 2 | | | Year 3 | | | Year 4 | | | Year 5 | | |
|--------|--------|--------|--------|--------|--------|--------|--------|----------------|----------------|----------------|----------------|--------|--------|------------|
| Fall | Winter | Spring | Fall | Winter | Spring | Fall | Winter | Spring | Fall | Winter | Spring | Fall | Winter | Spring |
| Study | Study | Free | Study | Study | Free | Study | Study | WKT 106 | WKT 206 | WKT 306 | WKT 406 | Study | Study | Graduation |

| Year 1 | | | Year 2 | | | Year 3 | | | Year 4 | | | Year 5 | | |
|--------|--------|--------|--------|--------|----------------|--------|----------------|----------------|----------------|--------|----------------|--------|--------|------------|
| Fall | Winter | Spring | Fall | Winter | Spring | Fall | Winter | Spring | Fall | Winter | Spring | Fall | Winter | Spring |
| Study | Study | Free | Study | Study | WKT 405 | Study | WKT 505 | WKT 506 | WKT 605 | Study | WKT 606 | Study | Study | Graduation |

Ryerson Co-op and Health Care Facilities

Students Employed (2000 - 2017) - 119

Work Terms completed (2000 - 2017) - 218

Facilities:

**CAMH
Health Centre
Holland Bloorview Kids Rehabilitation Hospital
Hospital for Sick Children (SickKids)
Mount Sinai Hospital
Princess Margaret Hospital
Scarborough Hospital**

**St. John's Rehab Hospital Credit Valley Hospital & Trillium
St. Michael's Hospital
Sunnybrook Health Sciences
University Health Network
Orillia Soldier's Memorial Hospital
West Park Healthcare Centre**

Programs:

**Accounting & Finance
Architectural Science
Biology
Business Technology Management
Contemporary Science**

**Computer Science
Chemical Engineering
Medical Physics
Occupational Health & Safety**

Co-op Student Roles

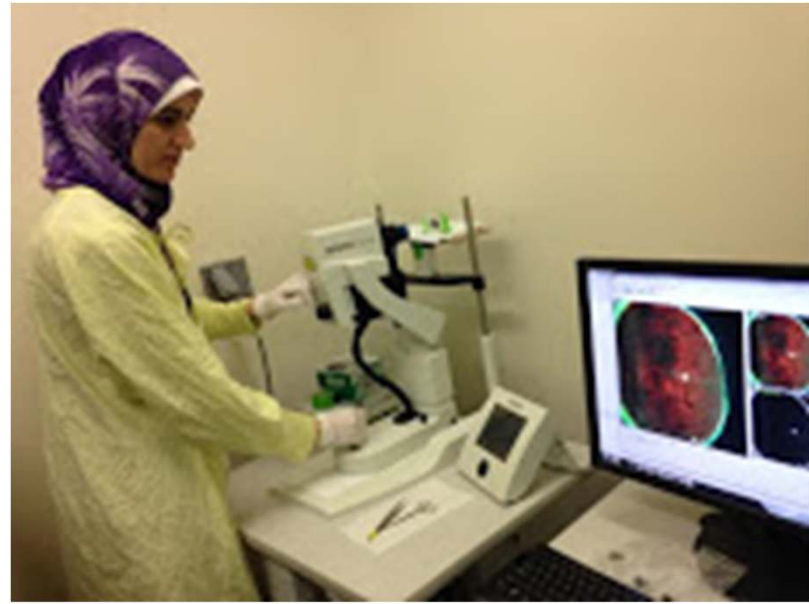
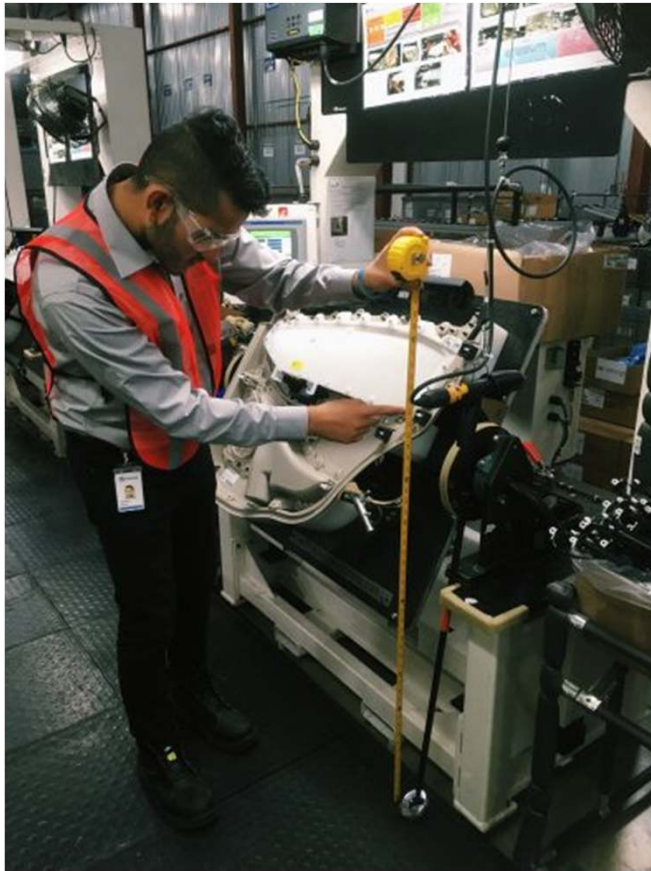
IT Support

Safety Programs

Facilities Support

Research & Analysis

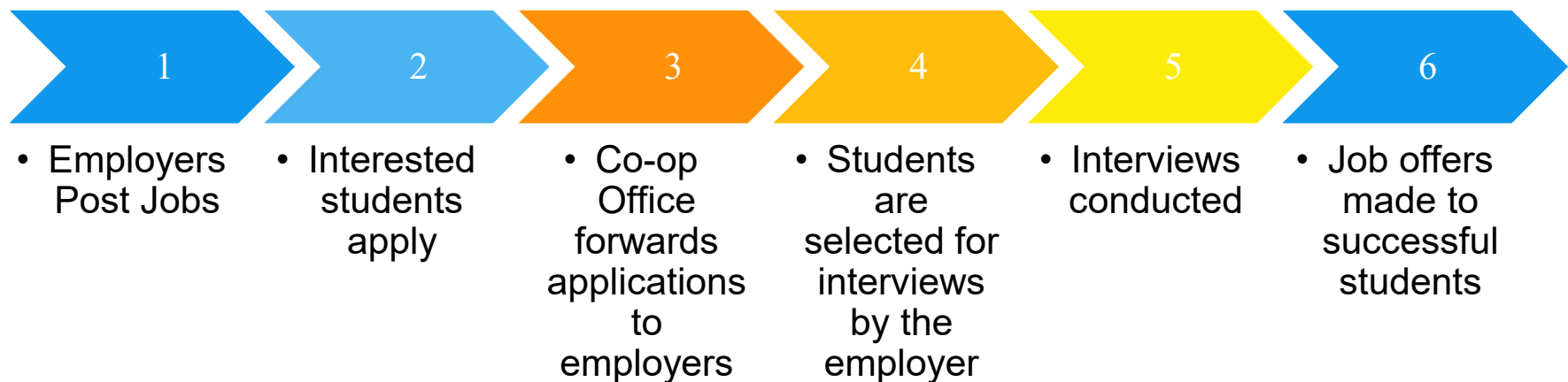
Engineering



Co-op Employment Process

Securing a co-op work term is a competitive process where students apply for and compete with fellow students and students from other universities for jobs. *It is not a placement, nor are students ranked or matched with employers.*

The hiring process is similar to a real world job search as shown below.



Education at Work Ontario

The mission of EWO is to advocate and facilitate co-operative education as an essential component of post-secondary education, while providing quality service and support to its stakeholders.

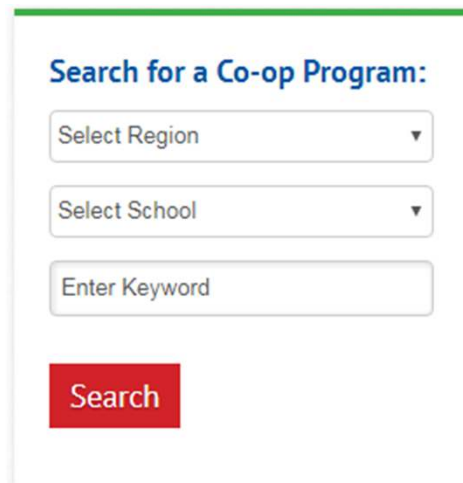
30 academic Institutions that includes both Colleges and Universities.

| | |
|-----------------------------------|-----------------------------|
| Algoma University | Algonquin College |
| Brock University | Centennial College |
| Carleton University | Conestoga College |
| Laurentian University | Confederation College |
| Lakehead University | Fanshawe College |
| McMaster University | Fleming College |
| Ryerson University | George Brown College |
| University of Guelph | Georgian College |
| University of Ottawa | Humber College |
| University of Toronto Scarborough | Niagara College |
| University of Waterloo | Mohawk College |
| University of Windsor | Redeemer University College |
| Western University | Sault College |
| Wilfrid Laurier University | Seneca College |
| York University | Sheridan College |
| | Lambton College |

Education at Work Ontario

How to Hire a Co-op Student

- Use the search feature on this website to identify the schools most likely to have students with the knowledge and skills your organization requires
- Prepare a detailed job description for the Co-op position, including information on your organization
- Send the position description to the school(s) where you want to advertise for Co-op students* You will receive the applications of interested students
- Review the applications and select interview candidates
- Conduct interviews and make hiring decision Notify the school(s) of your hiring decision



The image shows a search form titled "Search for a Co-op Program:". It contains three input fields: a dropdown menu for "Select Region", a dropdown menu for "Select School", and a text input field for "Enter Keyword". Below these fields is a red "Search" button.

Education at Work Ontario

Co-op Tax Credit

The tax credit is based on salaries and wages paid to a student in a co-operative education work placement. Corporations can claim 25 per cent of eligible expenditures (30 per cent for small businesses). The maximum credit for each work placement is \$3,000. Most work placements are for a minimum employment period of 10 weeks up to a maximum of four months.

Apprenticeship Training Tax Credit

The tax credit is based on salaries and wages paid to an apprentice. Qualifying businesses can claim 25 per cent of eligible expenditures (30 per cent for small businesses) made during the first 36 months of an apprenticeship program that commenced on or after April 24, 2015. The maximum credit for each apprenticeship is \$5,000 per year. The maximum credit over the first 36-month period of the apprenticeship is \$15,000.

Student Work-Integrated Learning Program (SWILP) Government Funding

Employers can receive wage subsidies of up to 50 percent of the wage cost for the placement (up to a maximum of \$5,000 per placement) up to 70 percent (up to a maximum of \$7,000 per placement) for under-represented students including first-year students, women in STEM, Indigenous students, persons with disabilities and newcomers.

www.ryerson.ca/co-op

ryecoop@Ryerson.ca

416-979-5068